

HOW DO EMPLOYEES FEEL ABOUT HOME WORKING?

A survey of 2,000 people (carried out by High Speed Training in August 2020) reveals some interesting insights into people's current opinions on working from home.

Are you **more** or **less** capable of **doing your job** at home compared with in the office?



MORE
26.65%



THE SAME
59.70%



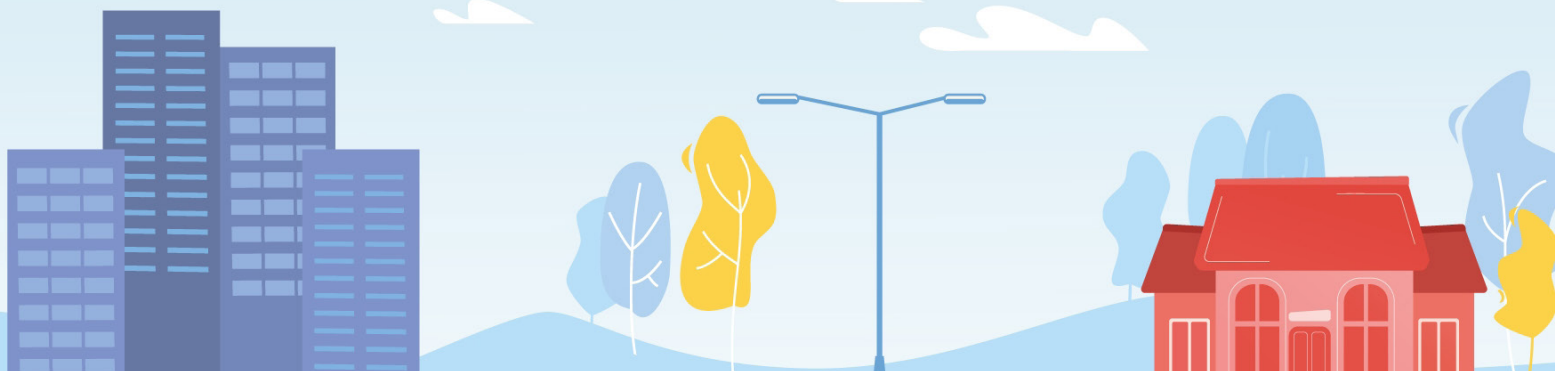
LESS
13.65%

▶ Over a quarter of respondents feel that they are more capable

▶ Well over half feel that they are just as capable

▶ Nearly one in six believe they are less capable

If you were given the option, how would you choose to work in the future?



ALWAYS OFFICE 6.40%	MOSTLY OFFICE 10.80%	EVEN SPLIT 16.10%	MOSTLY HOME 41.35%	ALWAYS HOME 23.25%
-------------------------------	--------------------------------	-----------------------------	------------------------------	------------------------------

▶ Only 6% would choose to always work from the office

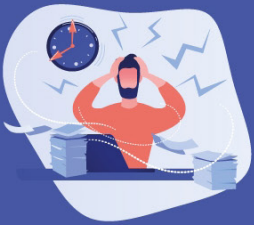
▶ One in 10 would work mostly from the office

▶ One in six would split their work evenly between both

▶ Nearly half would choose to work mostly from home

▶ Roughly 1 in 4 would choose to always work from home

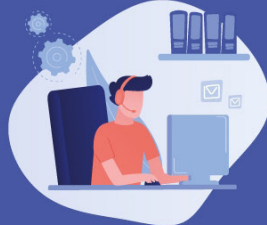
Do you think your **mental health** has **improved** or **declined** whilst working from home?



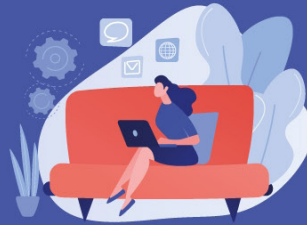
DECLINED A LOT
6.15%



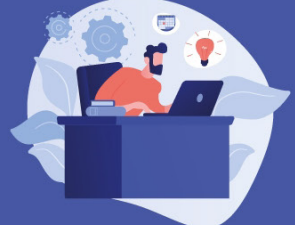
DECLINED A LITTLE
20.65%



STAYED THE SAME
23.50%



IMPROVED A LITTLE
26.95%



IMPROVED A LOT
22.05%

▶ Only 6% feel that it has declined a lot

▶ About a fifth feel that it has declined a little

▶ Around a quarter feel it has stayed the same

▶ Nearly 1 in 3 feel that it has improved a little

▶ Almost a quarter feel it has improved a lot

What equipment have you had to purchase yourself (not supplied by your company) in order to work from home?



WRIST SUPPORT
13.00%

CHAIR
28.65%

FOOTREST
12.35%

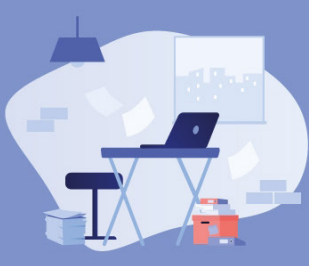
BACKREST
13.90%

▶ Almost half of respondents didn't have to purchase anything

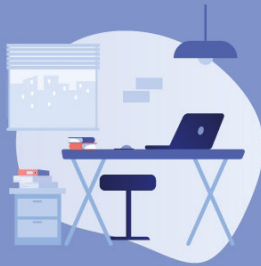
▶ Nearly one in three had to purchase their own desk and chair

▶ Almost a fifth had to purchase their own monitor, laptop, printer, or laptop riser

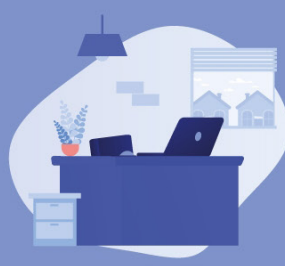
How happy would you say you **feel** with your current **home office set up**?



VERY UNHAPPY
6.15%



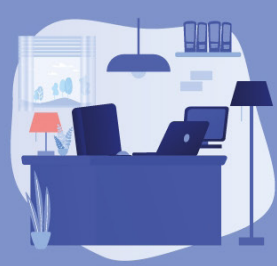
UNHAPPY
20.65%



NEUTRAL
23.50%



HAPPY
26.95%



VERY HAPPY
22.05%

Employees' attitudes towards home working are changing. Businesses have been presented with the opportunity to adopt home working and experience the benefits it offers.

With how positively people are evidently feeling about working from home, it could soon be the new norm for businesses.